

DEPOT & PINE STREET REDEVELOPMENT

BLOCK 2301, LOTS 10-12 AND 14-16, TOWNSHIP OF VERONA, ESSEX COUNTY, NEW JERSEY

SITE PLAN SUBMISSION

15 JULY 2020

| BUILDING A | | | | | | |
|-----------------------------|-------------|--------------|-------------|--------------|-------------|-----------|
| FLOOR | FIRST FLOOR | SECOND FLOOR | THIRD FLOOR | FOURTH FLOOR | TOTAL UNITS | TOTAL GSF |
| GSF | 21,825 | 21,530 | 21,530 | 18,300 | | 82,002 |
| Unit Area | 14,900 | 18,252 | 18,252 | 15,160 | | 65,381 |
| Common Area | 8,925 | 3,278 | 3,278 | 3,140 | | 18,621 |
| | | | | | | Unit GSF |
| 1A | 2 | 2 | 2 | 2 | 8 | 746 |
| 1B | 1 | 1 | 1 | 1 | 4 | 799 |
| 1C | 1 | 1 | 1 | 1 | 4 | 1018 |
| Total One Bedrooms | 4 | 4 | 4 | 4 | 16 | |
| 2A | 6 | 10 | 10 | 7 | 33 | 926 |
| 2B | 4 | 4 | 4 | 4 | 12 | 935 |
| 2C | 1 | 1 | 1 | 1 | 4 | 947 |
| 2D | 1 | 1 | 1 | 1 | 4 | 997 |
| Total Two Bedrooms | 12 | 16 | 16 | 9 | 53 | |
| 3A | | | | | 2 | 1320 |
| Total Three Bedrooms | | | | | 2 | |
| Total | 16 | 20 | 20 | 15 | 71 | |

| BUILDING B | | | | | |
|-----------------------------|-------------|--------------|-------------|-------------|-----------|
| FLOOR | FIRST FLOOR | SECOND FLOOR | THIRD FLOOR | TOTAL UNITS | TOTAL GSF |
| GSF | 5,682 | 5,642 | 5,642 | | 16,966 |
| Unit Area | 5,642 | 5,642 | 5,642 | | 16,926 |
| Common Area | 40 | | | | 40 |
| | | | | | Unit GSF |
| 3B | 2 | 2 | 2 | | 1412 |
| 3C | 2 | 2 | 2 | | 1400 |
| Total Three Bedrooms | 4 | 4 | 4 | 4 | |
| Total | 4 | 4 | 4 | 12 | |

| BUILDING C | | | | | |
|-----------------------------|-------------|--------------|-------------|-------------|-----------|
| FLOOR | FIRST FLOOR | SECOND FLOOR | THIRD FLOOR | TOTAL UNITS | TOTAL GSF |
| GSF | 5,682 | 5,642 | 5,642 | | 16,966 |
| Unit Area | 5,642 | 5,642 | 5,642 | | 16,926 |
| Common Area | 40 | | | | 40 |
| | | | | | Unit GSF |
| 3B | 2 | 2 | 2 | | 1412 |
| 3C | 2 | 2 | 2 | | 1400 |
| Total Three Bedrooms | 4 | 4 | 4 | 4 | |
| Total | 4 | 4 | 4 | 12 | |

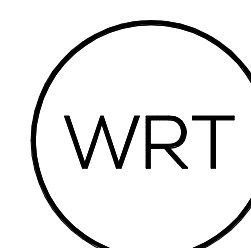
| TOTAL PROJECT AREA | | | | |
|--------------------|-------------|----------------|----------------|----------------|
| | Units Count | Gross | Commons/Circu. | Total Gross |
| Building A | 71 | 65,381 | 16,821 | 82,002 |
| Building B | 12 | 16,926 | 40 | 16,966 |
| Building C | 12 | 16,926 | 40 | 16,966 |
| TOTAL | 95 | 100,416 | 16,701 | 115,934 |

| SHEET LIST | |
|--------------|------------|
| SHEET NUMBER | SHEET NAME |

ARCHITECTURAL

| | |
|-------|--|
| Z-000 | COVER SHEET |
| Z-001 | BLDG A - 3D VIEW |
| Z-002 | BLDG B & C - 3D VIEW |
| Z-101 | BLDG A - FIRST, SECOND & THIRD FLOOR PLANS |
| Z-102 | BLDG A - FOURTH FLOOR & ROOF PLANS |
| Z-103 | BLDG B & C - FLOOR & ROOF PLANS |
| Z-111 | ENLARGED TYPICAL UNIT PLANS |
| Z-201 | BLDG A - EXTERIOR ELEVATIONS |
| Z-202 | BLDG A - EXTERIOR ELEVATIONS |
| Z-203 | BLDG B & C - EXTERIOR ELEVATIONS |

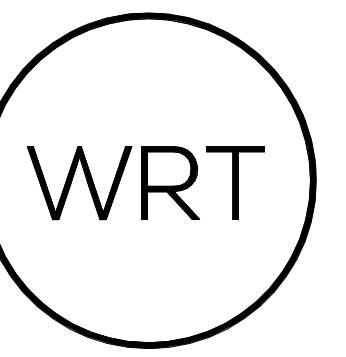
APPLICANT
pirhl PIRHL DEVELOPERS, LLC
 5 COMMERCE WAY, SUITE 210E
 HAMILTON, NJ 08691
 609.751.9664



ARCHITECT
WALLACE ROBERTS & TODD, LLC
 1700 MARKET STREET, SUITE 2800
 PHILADELPHIA, PA 19103
 215.732.5215
 wrtdesign.com

CIVIL ENGINEER
ESE CONSULTANTS, INC.
 100 WILLOW BROOK ROAD, SUITE 100
 FREEHOLD, NJ 07728
 732.446.8446

LANDSCAPE ARCHITECT
MELILLO+BAUER ASSOCIATES
 2339 HIGHWAY 34, BUILDING D-3
 MANASQUAN, NJ 08736
 732.528.0664



BUILDING A - PERSPECTIVE VIEW

DEPOT & PINE STREET REDEVELOPMENT
pirhl

BLOCK 2301, LOTS 10-12 AND 14-16, TOWNSHIP OF VERONA, ESSEX COUNTY, NEW JERSEY

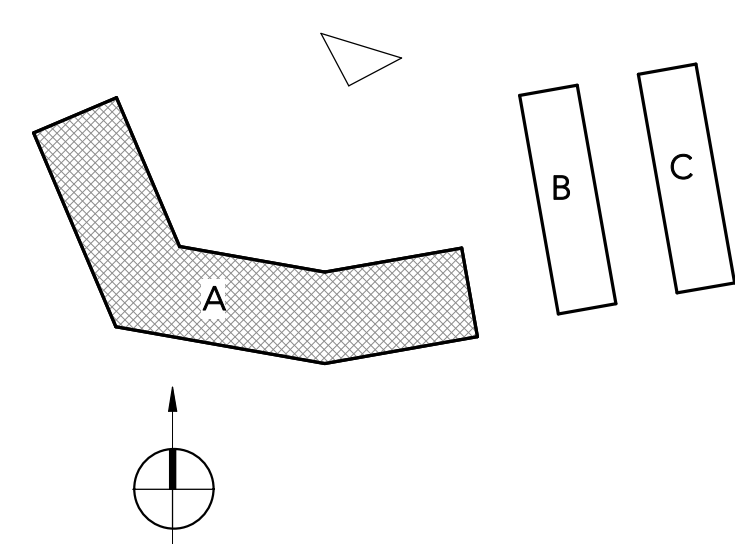
OWNER
PIHRL ACQUISITIONS LLC
5 COMMERCE WAY, SUITE 210E
HAMILTON, NJ 08691
609.751.9664

ARCHITECT
WALLACE ROBERTS & TODD, LLC
1700 MARKET STREET, SUITE 2800
PHILADELPHIA, PA 19103
215.732.5215
WRTDESIGN.COM

CIVIL ENGINEER
ESE CONSULTANTS, INC.
100 WILLOW BROOK ROAD, SUITE 100
FREEHOLD, NJ 07728
732.446.8446

LANDSCAPE ARCHITECT
MELILLO+BAUER ASSOCIATES
2339 HIGHWAY 34, BUILDING D-3
MANASQUAN, NJ 08736
732.528.0664

KEY PLAN



| REV # | DATE | DESCRIPTION |
|-------|----------|----------------------|
| | 07/15/20 | SITE PLAN SUBMISSION |

SEAL

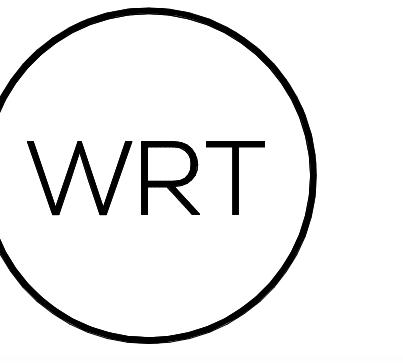
COPYRIGHT © 2020 - Wallace Roberts & Todd, LLC - ALL RIGHTS RESERVED -
All basic designs, arrangements and data indicated or represented by this drawing and written material appearing herein constitute the original and unpublished work of Wallace Roberts & Todd, LLC and the same may not be duplicated, used or disclosed to any person, firm or corporation for any purpose whatsoever without the written consent of the architect.

SITE PLAN SUBMISSION

WRT PROJECT # 8423
ISSUE DATE 07/15/20
DRAWN BY Author
CHECKED BY Checker
SCALE

BLDG A - 3D VIEW

Z-001



BUILDING B & C PERSPECTIVE VIEW

DEPOT & PINE STREET REDEVELOPMENT
PIHRL

BLOCK 2301, LOTS 10-12 AND 14-16, TOWNSHIP OF VERONA, ESSEX COUNTY, NEW JERSEY

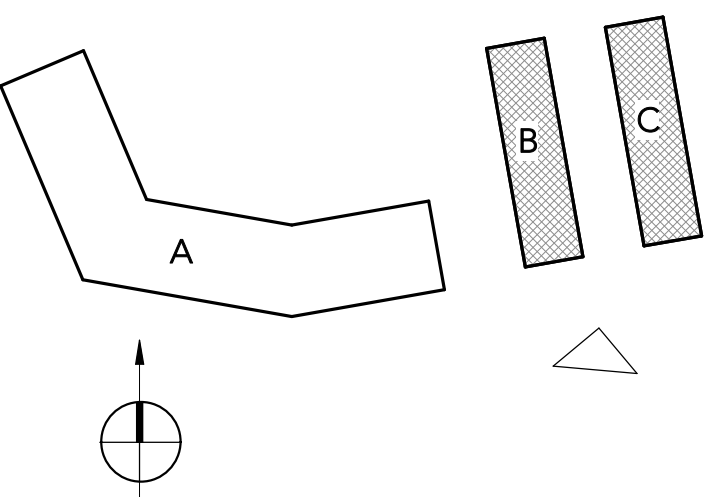
OWNER
PIHRL ACQUISITIONS LLC
5 COMMERCE WAY, SUITE 210E
HAMILTON, NJ 08691
609.751.9664

ARCHITECT
WALLACE ROBERTS & TODD, LLC
1700 MARKET STREET, SUITE 2800
PHILADELPHIA, PA 19103
215.732.5215
WRTDESIGN.COM

CIVIL ENGINEER
ESE CONSULTANTS, INC.
100 WILLOW BROOK ROAD, SUITE 100
FREEHOLD, NJ 07728
732.446.8446

LANDSCAPE ARCHITECT
MELILLO+BAUER ASSOCIATES
2339 HIGHWAY 34, BUILDING D-3
MANASQUAN, NJ 08736
732.528.0664

KEYPLAN



| REV # | DATE | DESCRIPTION |
|----------|------|----------------------|
| 07/15/20 | | SITE PLAN SUBMISSION |

SEAL

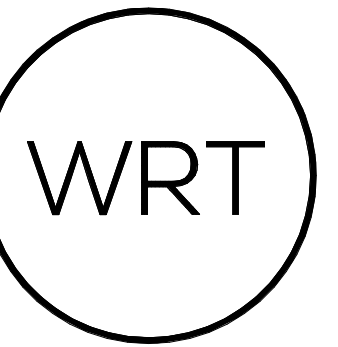
COPYRIGHT © 2020 - Wallace Roberts & Todd, LLC - ALL RIGHTS RESERVED -
All basic, design, arrangements and data indicated or represented by this drawing
and written material appearing herein constitute the original and unpublished work of
Wallace Roberts & Todd, LLC and the same may not be duplicated, used or disclosed
to any person, firm or corporation for any purpose whatsoever without the written
consent of the architect.

SITE PLAN SUBMISSION

WRT PROJECT # 8423
ISSUE DATE 07/15/20
DRAWN BY Author
CHECKED BY Checker
SCALE

BLDG B & C - 3D VIEW

Z-002



DEPOT & PINE STREET REDEVELOPMENT

pirhl

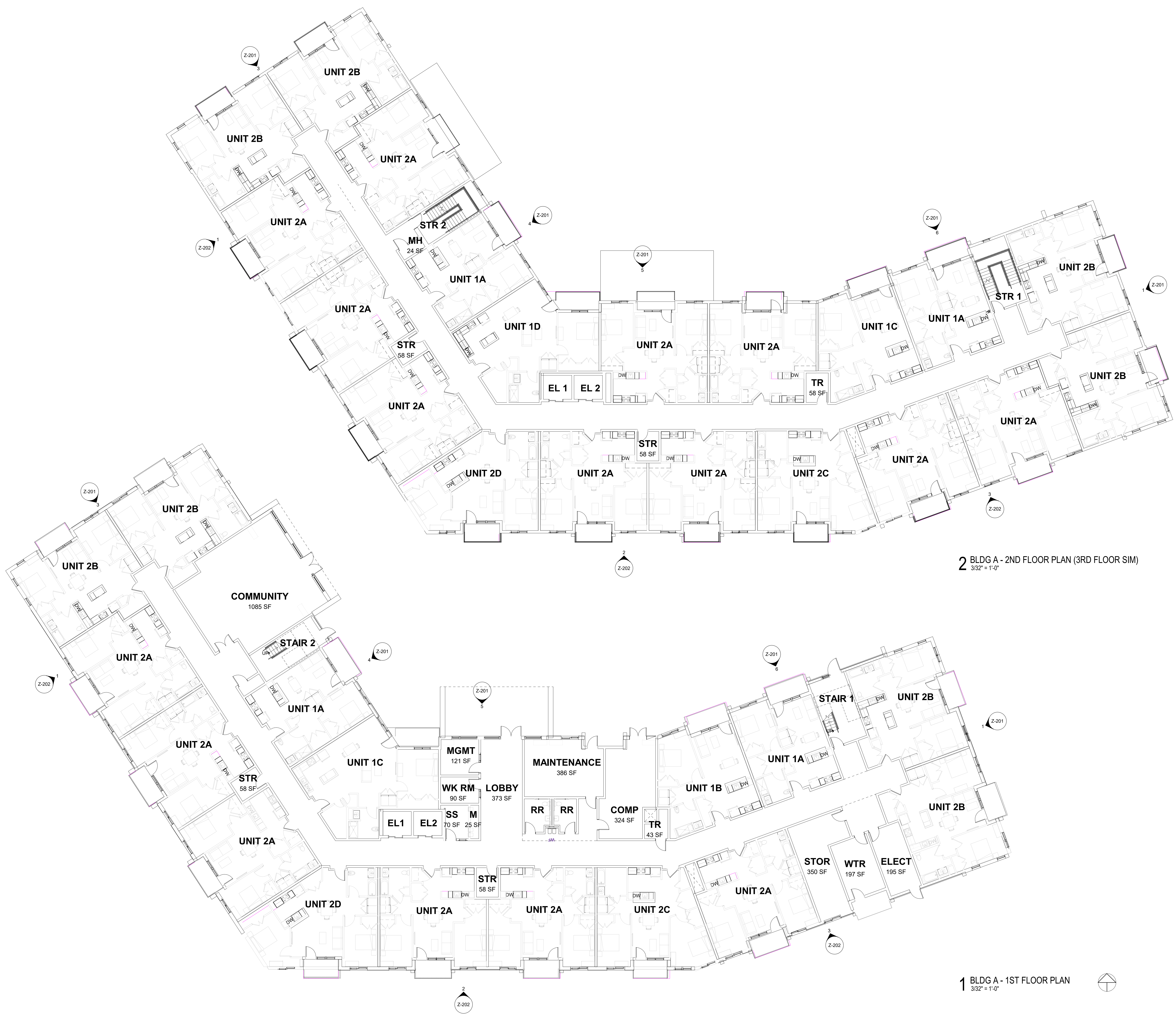
BLOCK 2301, LOTS 10-12 AND 14-16, TOWNSHIP OF VERONA, ESSEX COUNTY, NEW JERSEY

OWNER
PIHRL ACQUISITIONS LLC
5 COMMERCE WAY, SUITE 210E
HAMILTON, NJ 08611
609.751.9664

ARCHITECT
WALLACE ROBERTS & TODD, LLC
1700 MARKET STREET, SUITE 2800
PHILADELPHIA, PA 19103
215.732.5215
WRTDESIGN.COM

CIVIL ENGINEER
ESE CONSULTANTS, INC.
100 WILLOW BROOK ROAD, SUITE 100
FREEHOLD, NJ 07728
732.446.8446

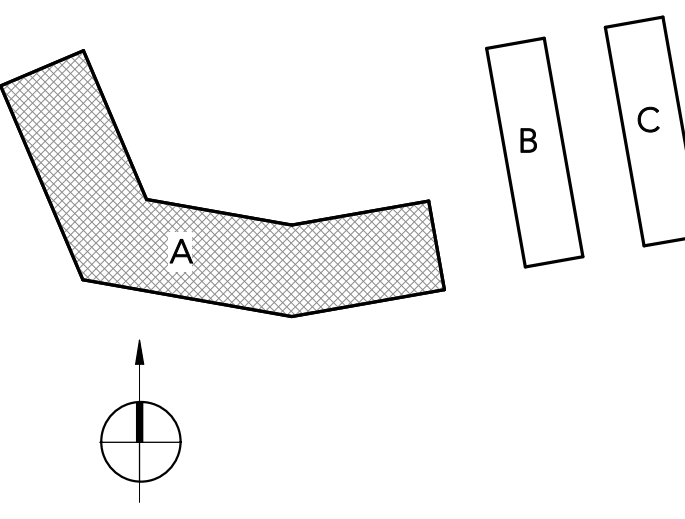
LANDSCAPE ARCHITECT
MELILLO+BAUER ASSOCIATES
2339 HIGHWAY 34, BUILDING D-3
MANASQUAN, NJ 08736
732.528.0664



2 BLDG A - 2ND FLOOR PLAN (3RD FLOOR SIM)
3/32" = 1'-0"

1 BLDG A - 1ST FLOOR PLAN
3/32" = 1'-0"

KEYPLAN



| REV # | DATE | DESCRIPTION |
|----------|----------|----------------------|
| 07/15/20 | 07/15/20 | SITE PLAN SUBMISSION |

SEAL

COPYRIGHT © 2020 - Wallace Roberts & Todd, LLC - ALL RIGHTS RESERVED -
All basic designs, arrangements and details indicated or represented by this drawing and written material appearing herein constitute the original and unpublished work of Wallace Roberts & Todd, LLC and the same may not be duplicated, used or disclosed to any person, firm or corporation for any purpose whatsoever without the written consent of the architect.

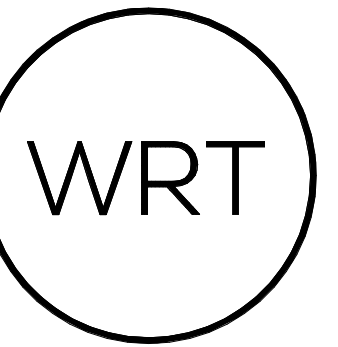
SITE PLAN SUBMISSION

WRT PROJECT # 8423
ISSUE DATE 07/15/20
DRAWN BY Author
CHECKED BY Checker
SCALE 3/32" = 1'-0"

BLDG A - FIRST, SECOND & THIRD FLOOR PLANS

Z-101

E:\Projects\2301_PIRHL_VERONA_081914.rvt



DEPOT & PINE STREET REDEVELOPMENT

pirhl

BLOCK 2301, LOTS 10-12 AND 14-16, TOWNSHIP OF VERONA, ESSEX COUNTY, NEW JERSEY

OWNER
PIHRL ACQUISITIONS LLC
5 COMMERCE WAY, SUITE 210E
HAMILTON, NJ 08691
609.751.9664

ARCHITECT
WALLACE ROBERTS & TODD, LLC
1700 MARKET STREET, SUITE 2800
PHILADELPHIA, PA 19103
215.732.5215
WRTDESIGN.COM

CIVIL ENGINEER
ESE CONSULTANTS, INC.
100 WILLOW BROOK ROAD, SUITE 100
FREEHOLD, NJ 07728
732.446.8446

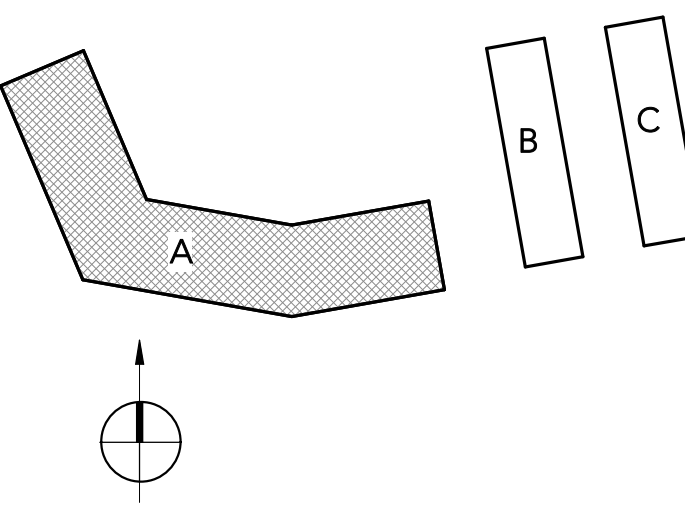
LANDSCAPE ARCHITECT
MELILLO+BAUER ASSOCIATES
2339 HIGHWAY 34, BUILDING D-3
MANASQUAN, NJ 08736
732.528.0664



2 BLDG A - ROOF PLAN
3/32" = 1'-0"

1 BLDG A - 4TH FLOOR PLAN
3/32" = 1'-0"

KEYPLAN



| REV # | DATE | DESCRIPTION |
|-------|----------|----------------------|
| 1 | 07/15/20 | SITE PLAN SUBMISSION |

SEAL

COPYRIGHT © 2020 - Wallace Roberts & Todd, LLC - ALL RIGHTS RESERVED -
All basic designs, arrangements and details indicated or represented by this drawing and written material appearing herein constitute the original and unpublished work of Wallace Roberts & Todd, LLC and the same may not be duplicated, used or disclosed to any person, firm or corporation for any purpose whatsoever without the written consent of the architect.

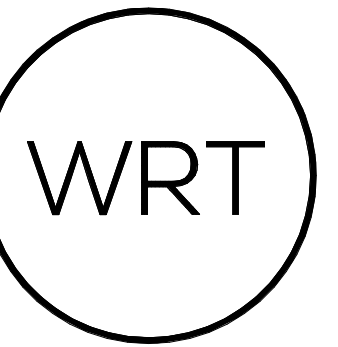
SITE PLAN SUBMISSION

WRT PROJECT # 8423
ISSUE DATE 07/15/20
DRAWN BY Author
CHECKED BY Checker
SCALE 3/32" = 1'-0"

BLDG A - FOURTH FLOOR & ROOF PLANS

Z-102

E:\Projects\2301\PIHRL_VERONA_schematic.rvt



DEPOT & PINE STREET REDEVELOPMENT

pirhl

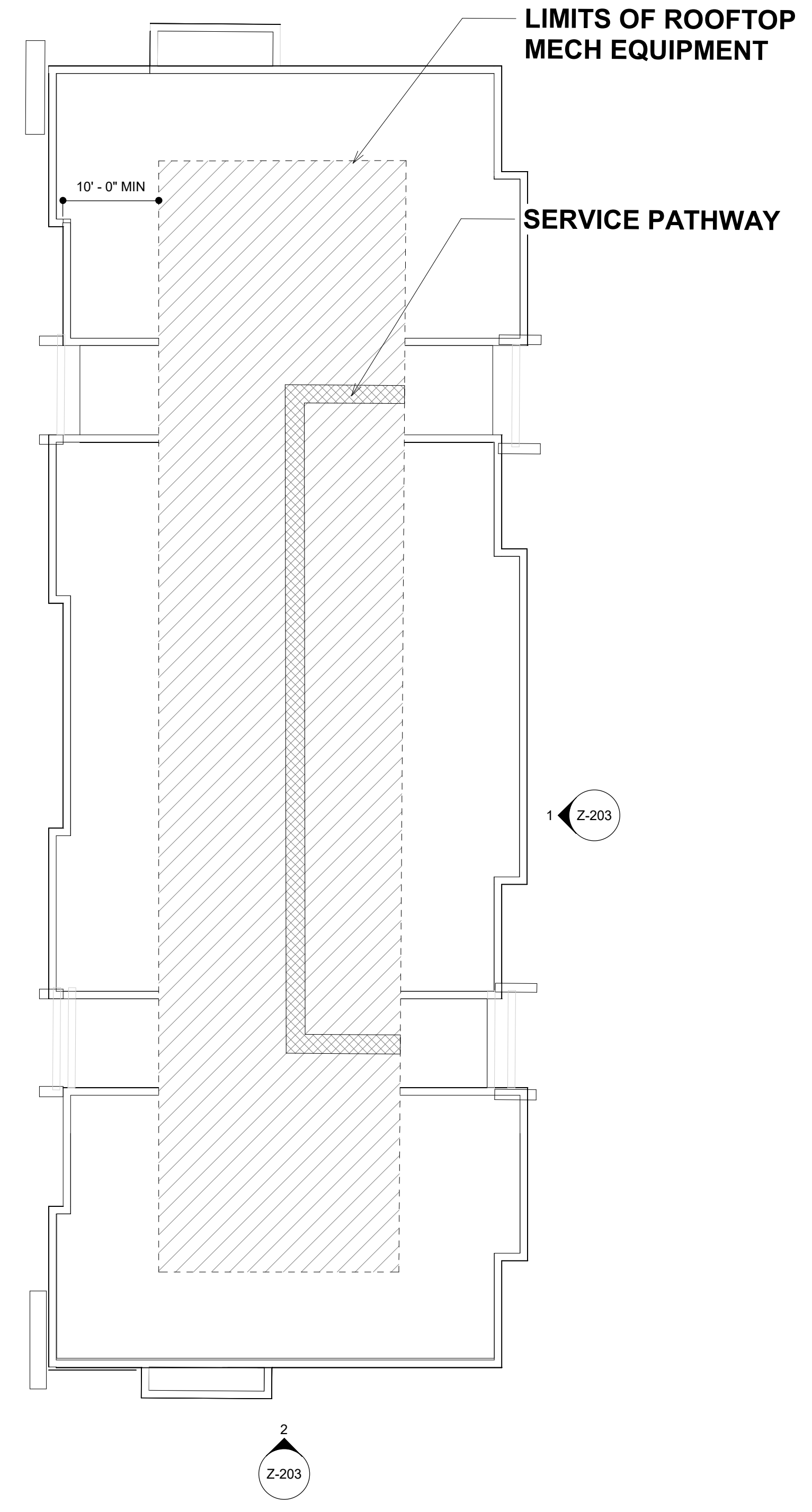
BLOCK 2301, LOTS 10-12 AND 14-16, TOWNSHIP OF VERONA, ESSEX COUNTY, NEW JERSEY

OWNER
PIHRL ACQUISITIONS LLC
5 COMMERCE WAY, SUITE 210E
HAMILTON, NJ 08691
609.751.9664

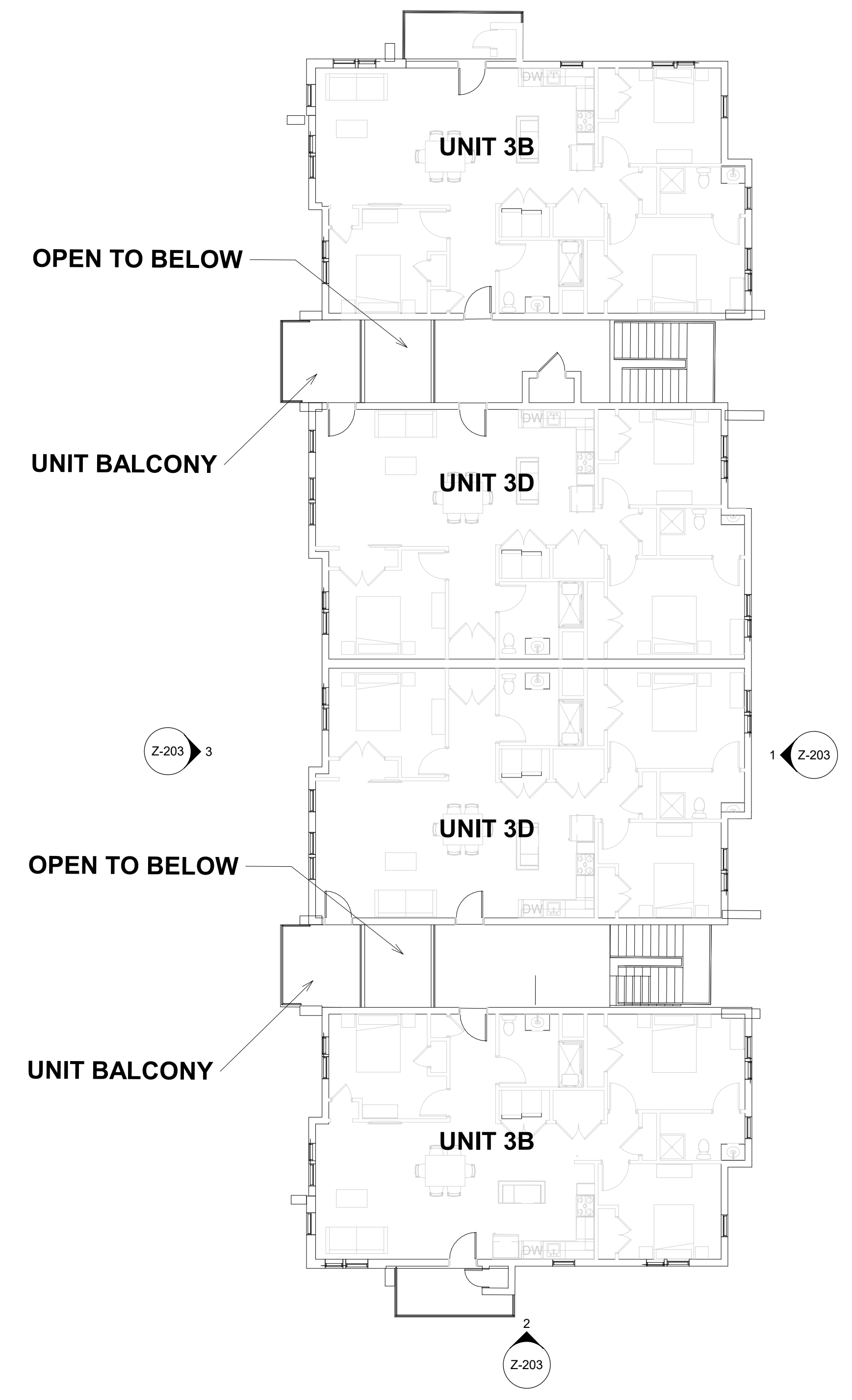
ARCHITECT
WALLACE ROBERTS & TODD, LLC
1700 MARKET STREET, SUITE 2800
PHILADELPHIA, PA 19103
215.732.5215
WRTDESIGN.COM

CIVIL ENGINEER
ESE CONSULTANTS, INC.
100 WILLOW BROOK ROAD, SUITE 100
FREEHOLD, NJ 07728
732.446.8446

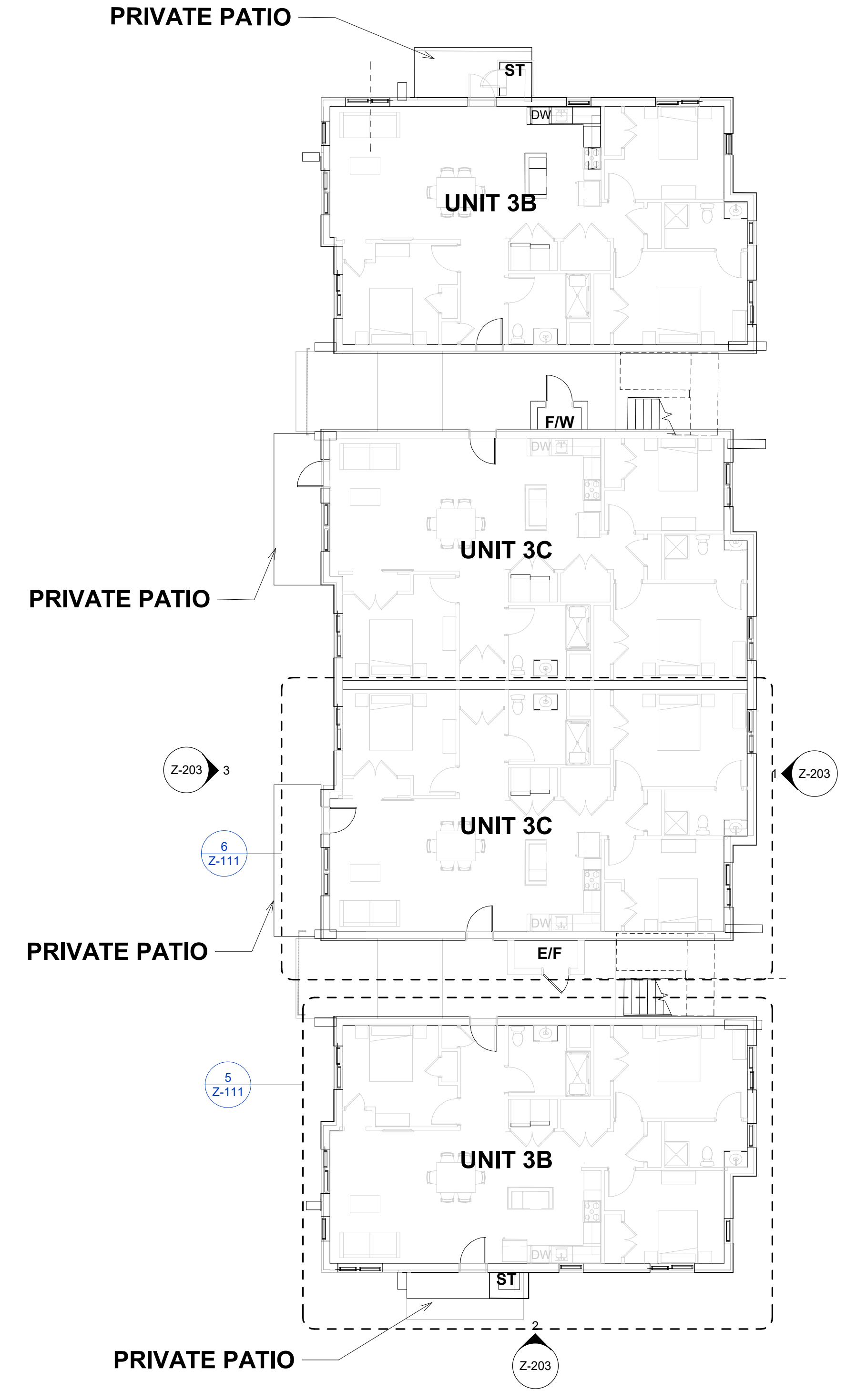
LANDSCAPE ARCHITECT
MELILLO+BAUER ASSOCIATES
2339 HIGHWAY 34, BUILDING D-3
MANASQUAN, NJ 08736
732.528.0664



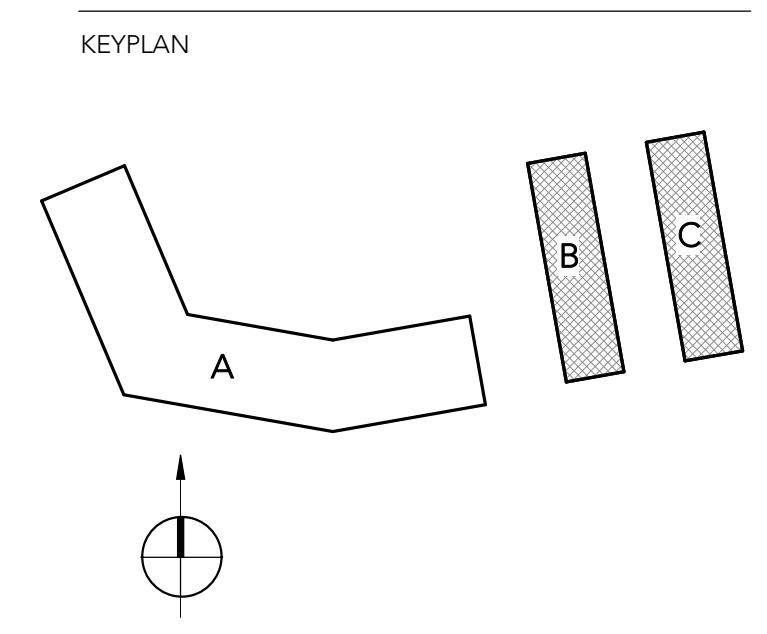
3 BLDG B & C - ROOF
3/32" = 1'-0"



2 BLDG B & C - 2ND FLOOR PLAN (3RD FLOOR SIM)
3/32" = 1'-0"



1 BLDG B & C - 1ST FLOOR PLAN
3/32" = 1'-0"



| REV # | DATE | DESCRIPTION |
|-------|----------|----------------------|
| 1 | 07/15/20 | SITE PLAN SUBMISSION |

SEAL

COPYRIGHT © 2020 - Wallace Roberts & Todd, LLC - ALL RIGHTS RESERVED -
All basic designs, arrangements and data indicated or represented by this drawing and written material appearing herein constitute the original and unpublished work of Wallace Roberts & Todd, LLC and the same may not be duplicated, used or disclosed to any person, firm or corporation for any purpose whatsoever without the written consent of the architect.

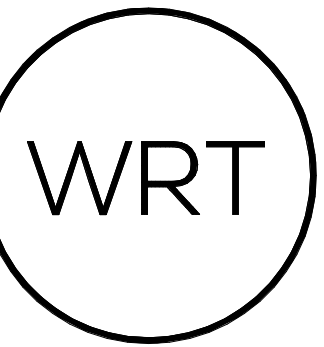
SITE PLAN SUBMISSION

WRT PROJECT # 8423
ISSUE DATE 07/15/20
DRAWN BY Author
CHECKED BY Checker
SCALE 3/32" = 1'-0"

BLDG B & C - FLOOR & ROOF PLANS

Z-103

E:\Revit\2020\2301\PIHRL_VERONA_081919.rvt



DEPOT & PINE STREET REDEVELOPMENT
pirhl

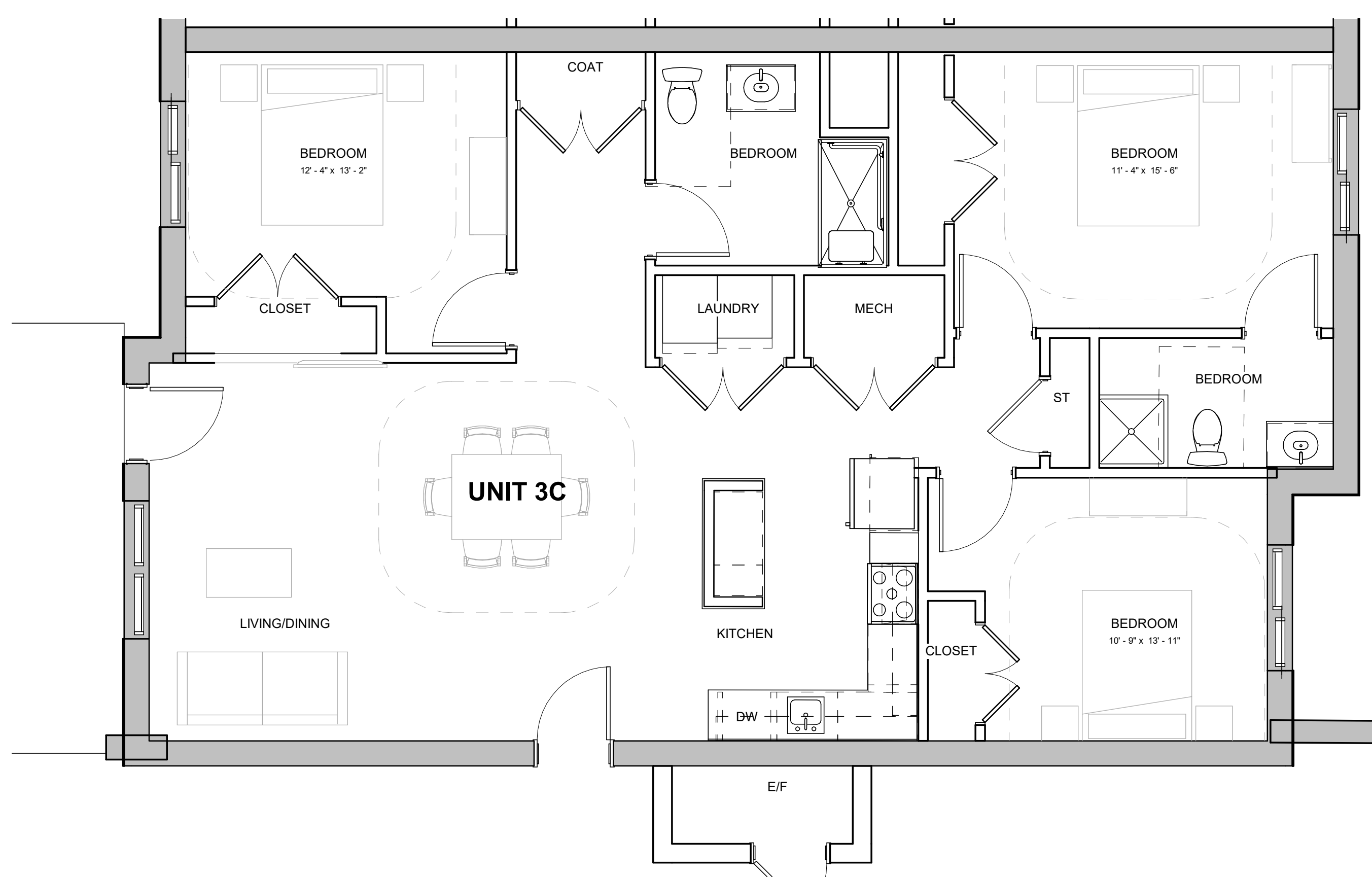
BLOCK 2301, LOTS 10-12 AND 14-16, TOWNSHIP OF VERONA, ESSEX COUNTY, NEW JERSEY

OWNER
PIHRL ACQUISITIONS LLC
5 COMMERCE WAY, SUITE 210E
HAMILTON, NJ 08691
609.751.9664

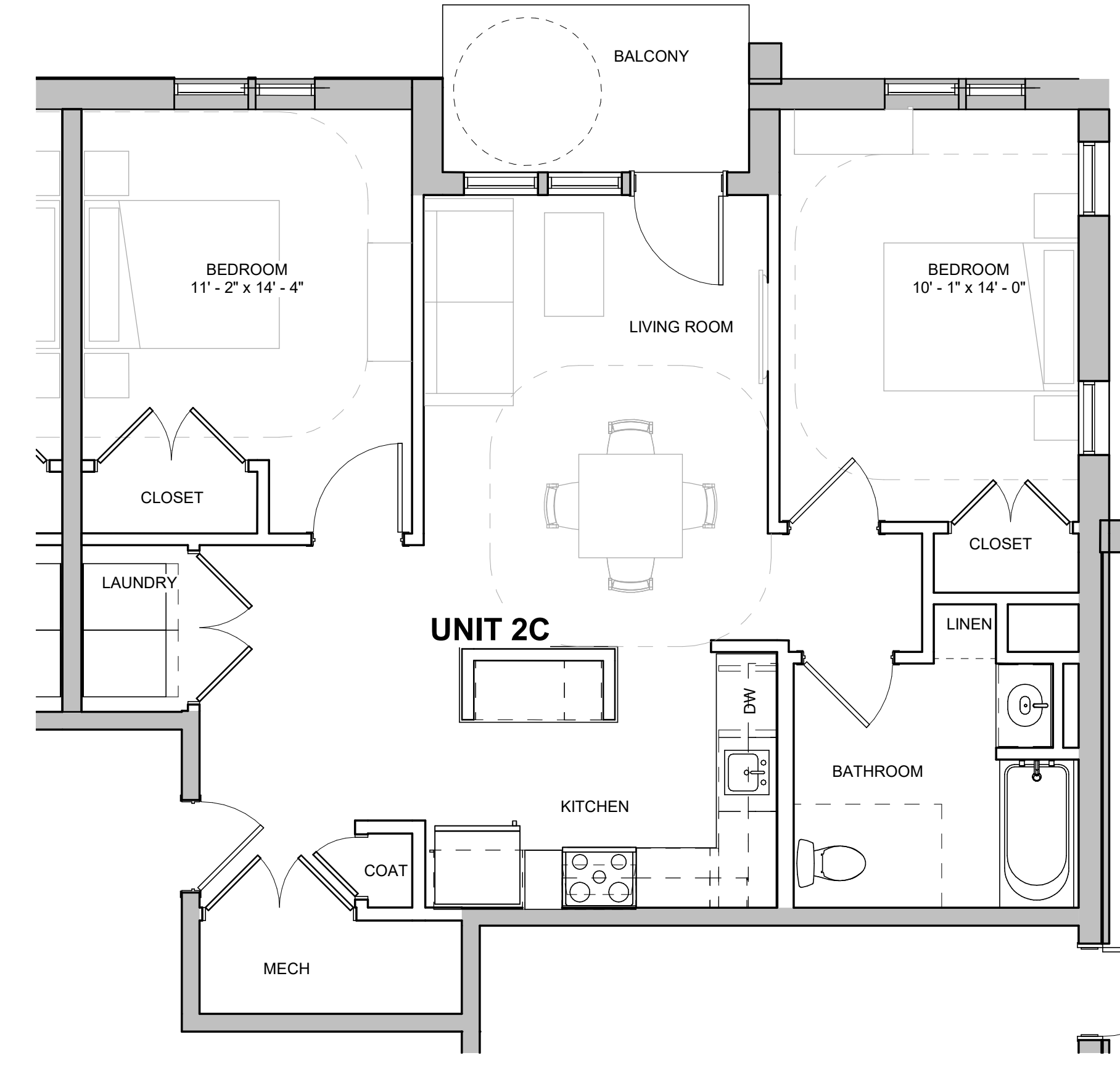
ARCHITECT
WALLACE ROBERTS & TODD, LLC
1700 MARKET STREET, SUITE 2800
PHILADELPHIA, PA 19103
215.732.5215
WRTDESIGN.COM

CIVIL ENGINEER
ESE CONSULTANTS, INC.
100 WILLOW BROOK ROAD, SUITE 100
FREEHOLD, NJ 07728
732.446.8446

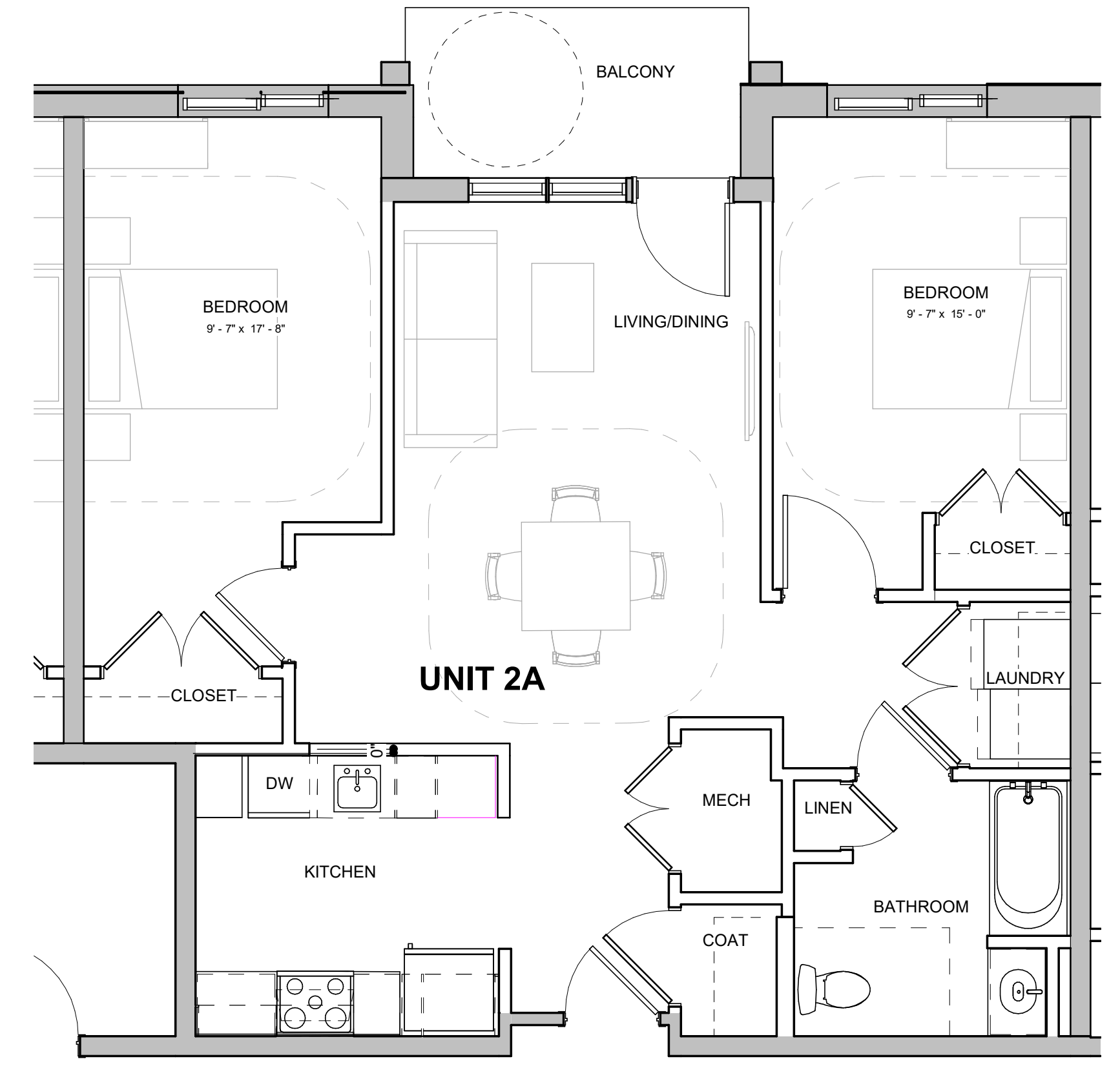
LANDSCAPE ARCHITECT
MELILLO+BAUER ASSOCIATES
2339 HIGHWAY 34, BUILDING D-3
MANASQUAN, NJ 08736
732.528.0664



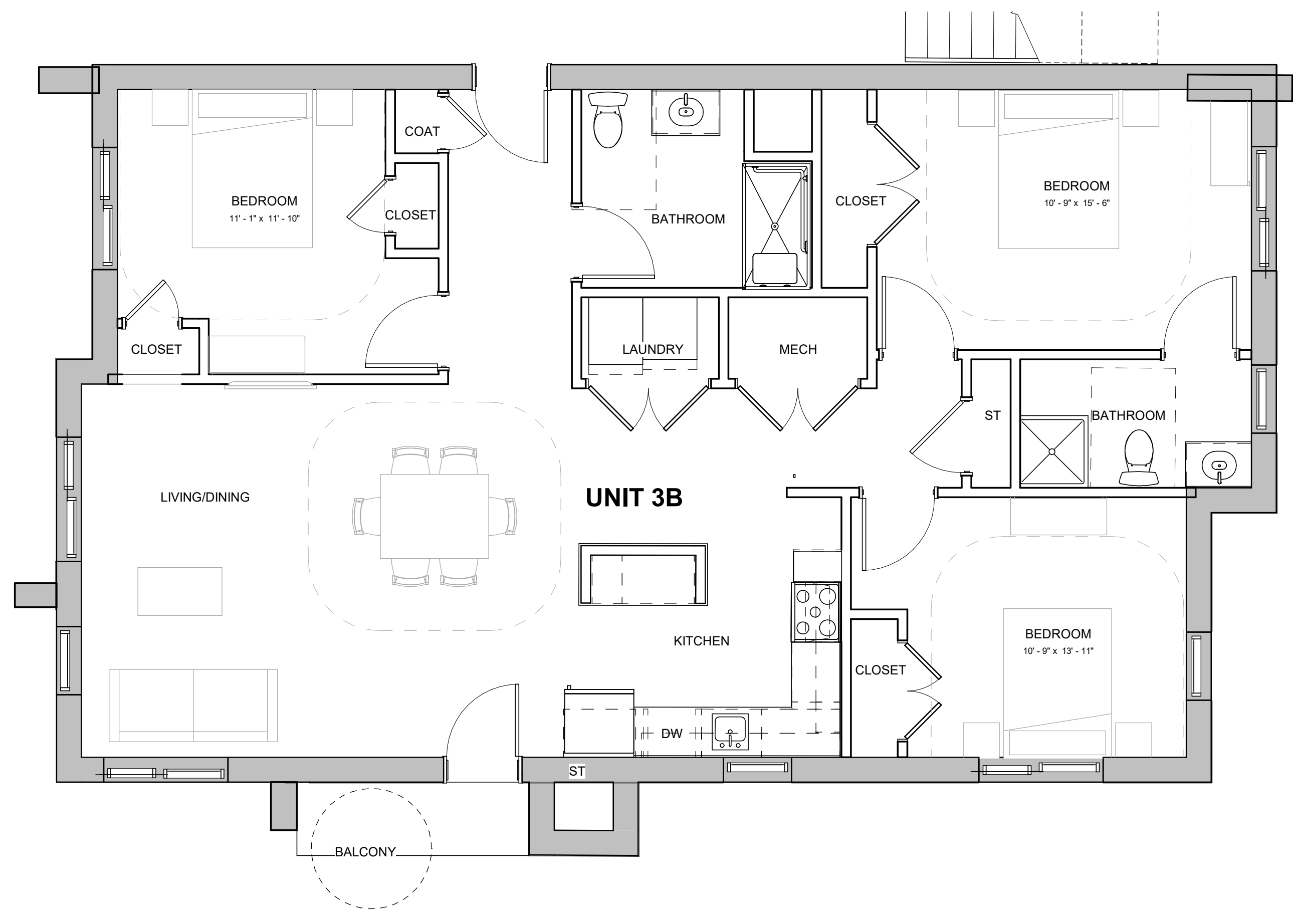
6 BLDG B&C_UNIT 3C
1/4" = 1'-0"



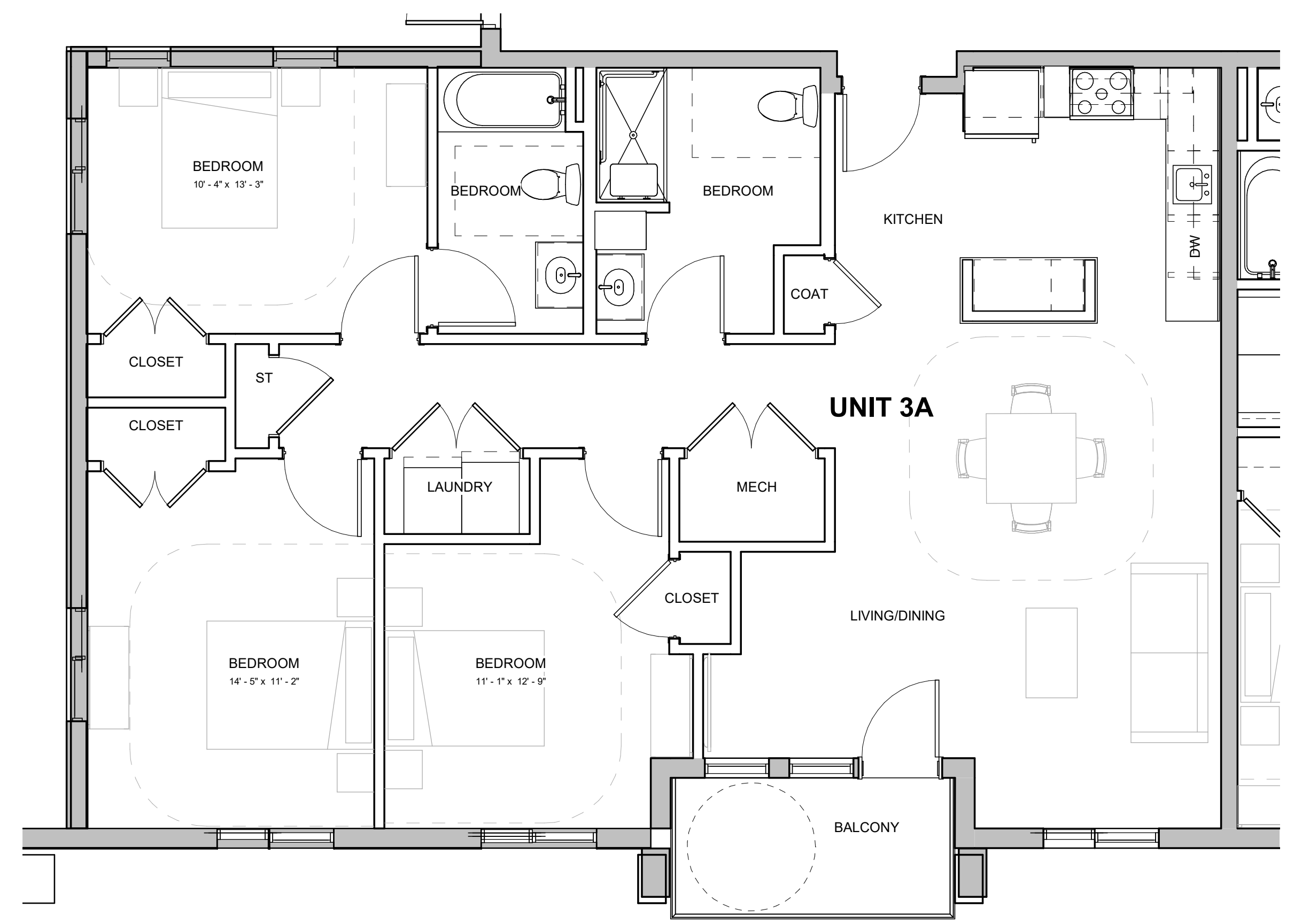
4 BLDG A_UNIT 2C
1/4" = 1'-0"



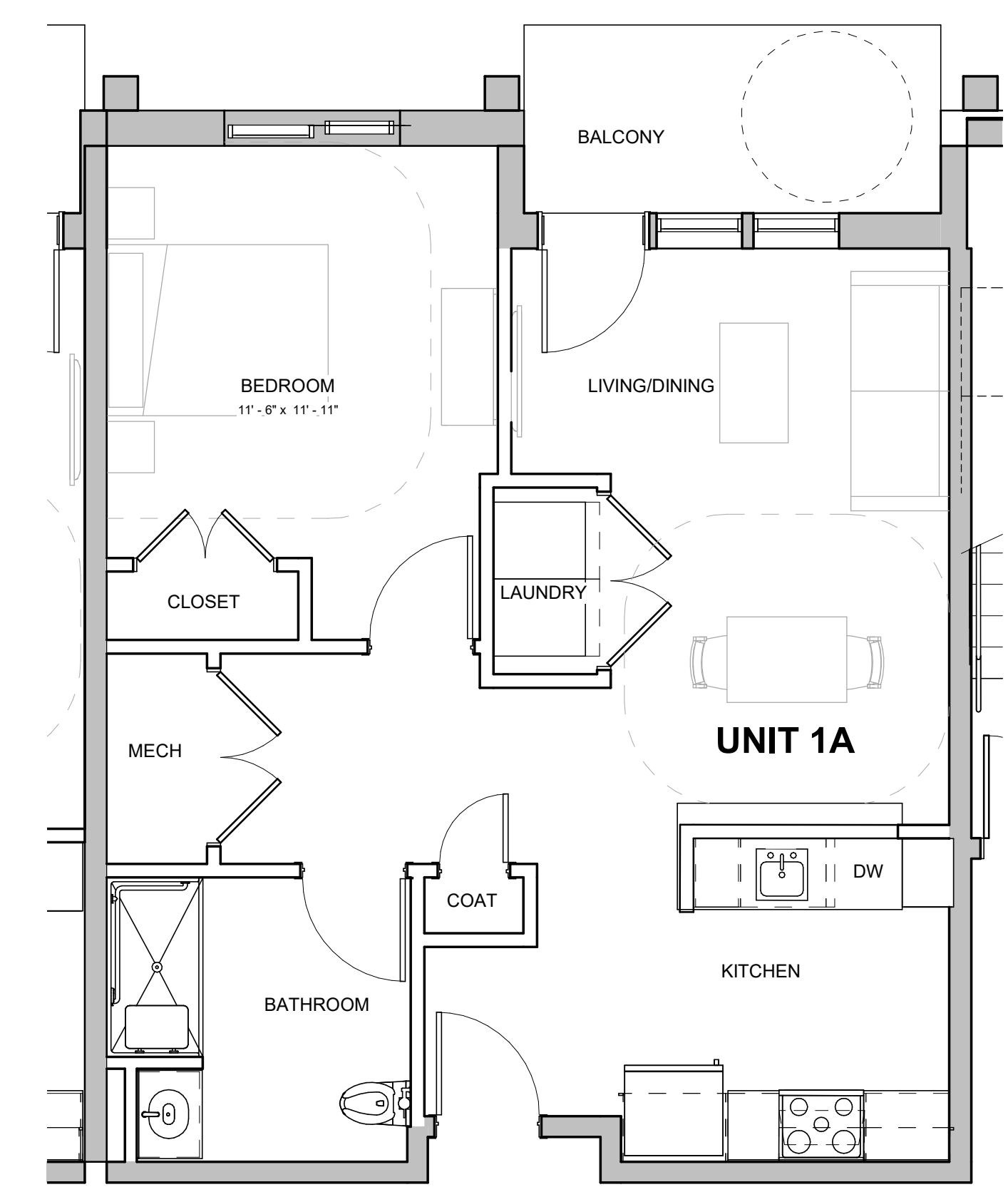
2 BLDG A_UNIT 2A
1/4" = 1'-0"



5 BLDG B&C_UNIT 3B
1/4" = 1'-0"

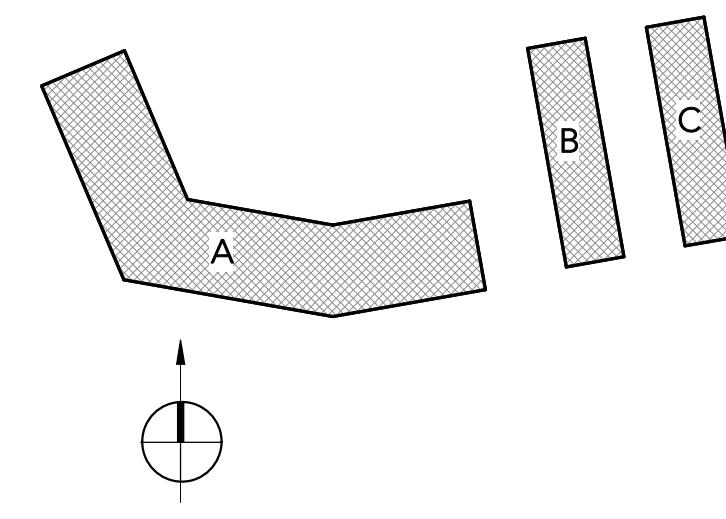


3 BLDG A - UNIT 3A
1/4" = 1'-0"



1 BLDG A_UNIT 1A
1/4" = 1'-0"

KEYPLAN



| REV # | DATE | DESCRIPTION |
|----------|------|----------------------|
| 07/15/20 | | SITE PLAN SUBMISSION |

SEAL

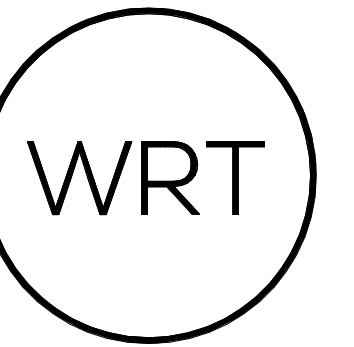
COPYRIGHT © 2020 - Wallace Roberts & Todd, LLC - ALL RIGHTS RESERVED -
All basic designs, arrangements and data indicated or represented by this drawing and written material appearing herein constitute the original and unpublished work of Wallace Roberts & Todd, LLC and the same may not be duplicated, used or disclosed to any person, firm or corporation for any purpose whatsoever without the written consent of the architect.

SITE PLAN SUBMISSION

WRT PROJECT # 8423
ISSUE DATE 07/15/20
DRAWN BY Author
CHECKED BY Checker
SCALE 1/4" = 1'-0"

ENLARGED TYPICAL UNIT PLANS
Z-111

E:\REVISED\PIHRL_VERONA_apr2019.rvt



DEPOT & PINE STREET REDEVELOPMENT
pirhl

BLOCK 2301, LOTS 10-12 AND 14-16, TOWNSHIP OF VERONA, ESSEX COUNTY, NEW JERSEY

OWNER
PIHRL ACQUISITIONS LLC
 5 COMMERCE WAY, SUITE 210E
 HAMILTON, NJ 08691
 609.751.9664

ARCHITECT
WALLACE ROBERTS & TODD, LLC
 1700 MARKET STREET, SUITE 2800
 PHILADELPHIA, PA 19103
 215.732.5215
 WRTDESIGN.COM

CIVIL ENGINEER
ESE CONSULTANTS, INC.
 100 WILLOW BROOK ROAD, SUITE 100
 FREEHOLD, NJ 07728
 732.446.8446

LANDSCAPE ARCHITECT
MELILLO+BAUER ASSOCIATES
 2339 HIGHWAY 34, BUILDING D-3
 MANASQUAN, NJ 08736
 732.528.0664



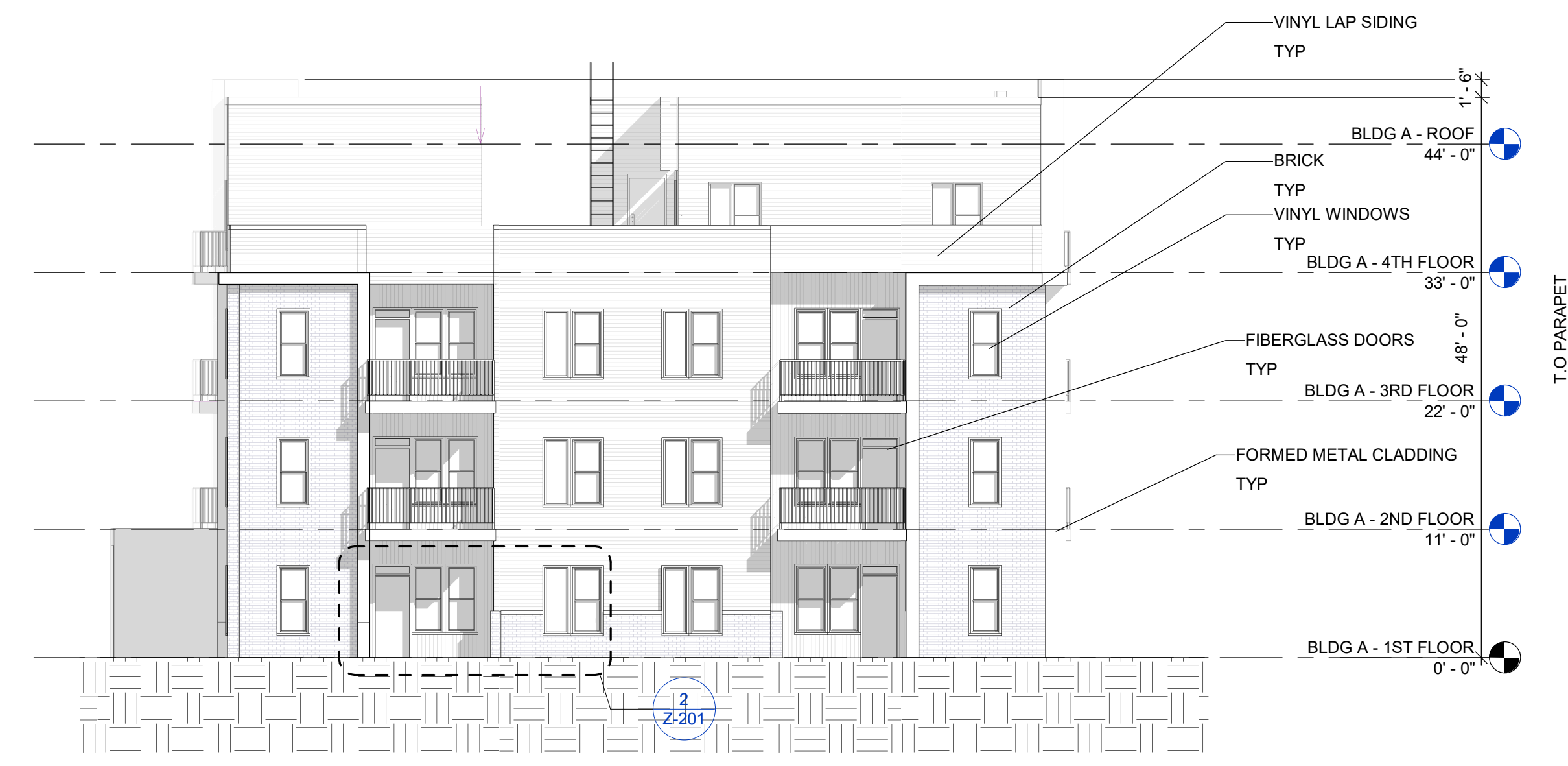
6 ELEVATION - BLDG A - NORTHEAST
 3/32" = 1'-0"



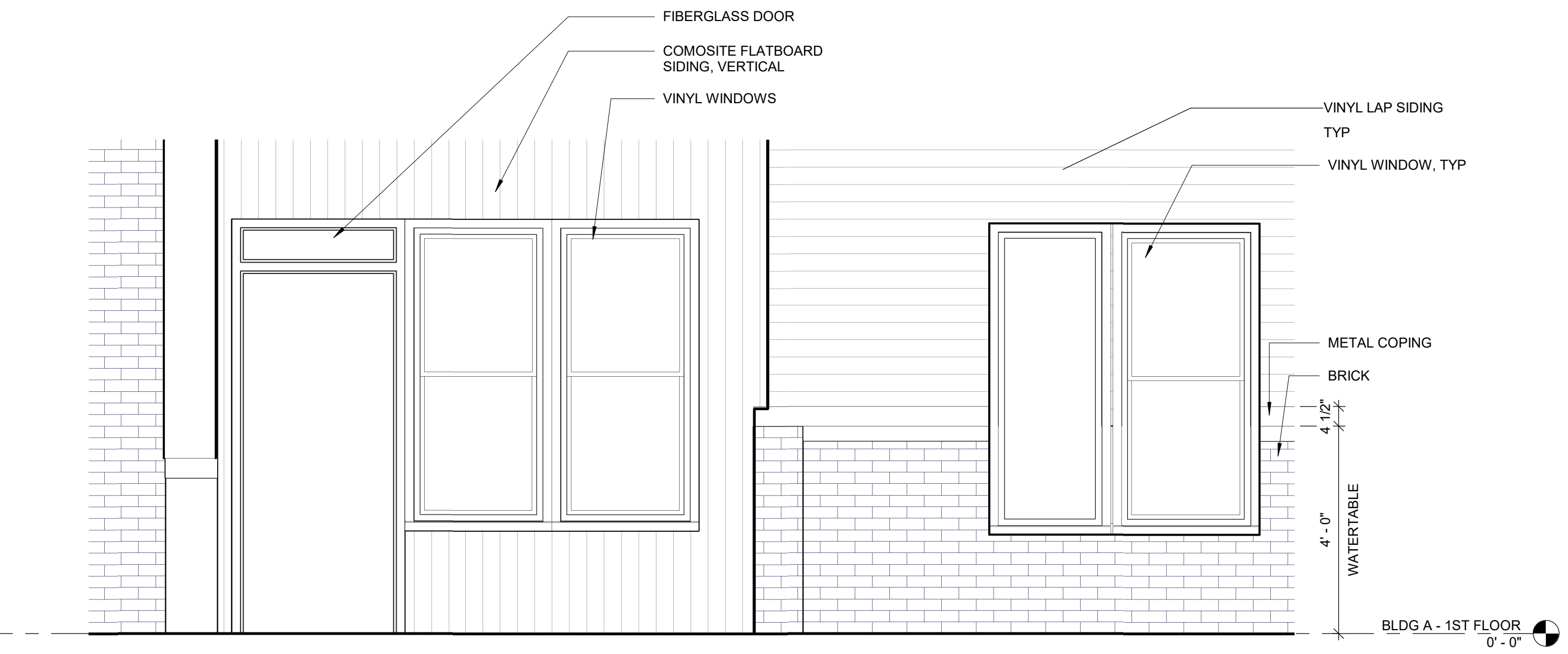
5 ELEVATION - BLDG A - NORTH
 3/32" = 1'-0"



4 ELEVATION - BLDG A - NORTHWEST
 3/32" = 1'-0"



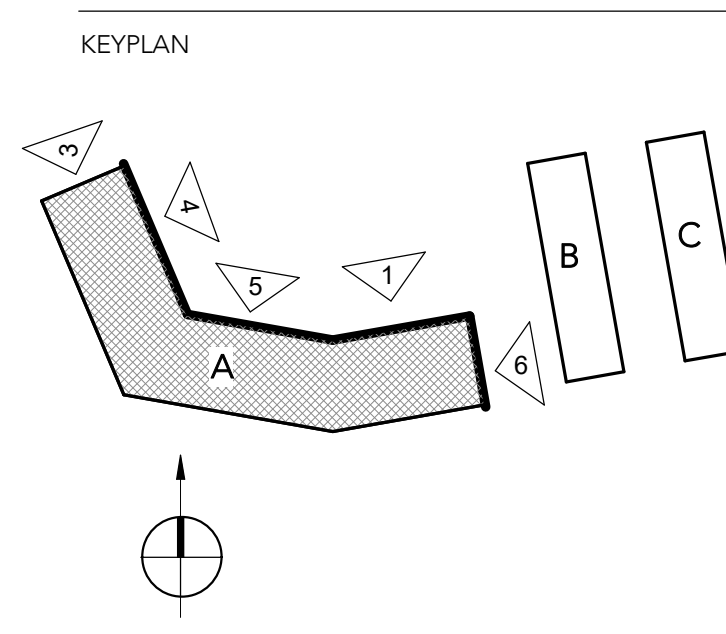
3 ELEVATION - BLDG A - WEST
 3/32" = 1'-0"



2 ELEVATION DETAIL. TYP.
 1/2" = 1'-0"



1 ELEVATION - BLDG A - EAST
 3/32" = 1'-0"



| REV # | DATE | DESCRIPTION |
|-------|----------|----------------------|
| 1 | 07/15/20 | SITE PLAN SUBMISSION |

SEAL

COPYRIGHT © 2020 - Wallace Roberts & Todd, LLC - ALL RIGHTS RESERVED -
 All basic designs, arrangements and plans indicated or represented by this drawing and written material appearing herein constitute the original and unpublished work of Wallace Roberts & Todd, LLC and the same may not be duplicated, used or disclosed to any person, firm or corporation for any purpose whatsoever without the written consent of the architect.

SITE PLAN SUBMISSION

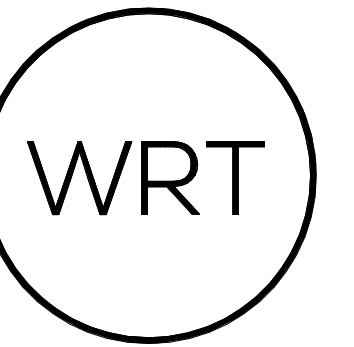
WRT PROJECT # 8423
 ISSUE DATE 07/15/20
 DRAWN BY Author
 CHECKED BY Checker
 SCALE As indicated

BLDG A - EXTERIOR ELEVATIONS
Z-201

MATERIAL NOTES:

- METAL COPING
- ALUMINUM BALCONY RAILINGS, TYP
- BRICK
- VINYL SIDING, COLOR 1
- VINYL SIDING, COLOR 2
- VERTICAL FAUX WOOD SIDING
- FIBERGLASS DOOR
- VINYL WINDOW AND TRIM, TYP
- METAL TRIM

E:\Revit\2020\8423\PIHRL_VERONA_081914.rvt 7/15/2020 2:26:05 PM



DEPOT & PINE STREET REDEVELOPMENT

BLOCK 2301, LOTS 10-12 AND 14-16, TOWNSHIP OF VERONA, ESSEX COUNTY, NEW JERSEY

OWNER
PIHRL ACQUISITIONS LLC
5 COMMERCE WAY, SUITE 210E
HAMILTON, NJ 08691
609.751.9664

ARCHITECT
WALLACE ROBERTS & TODD, LLC
1700 MARKET STREET, SUITE 2800
PHILADELPHIA, PA 19103
215.732.5215
WRTDESIGN.COM

CIVIL ENGINEER
ESE CONSULTANTS, INC.
100 WILLOW BROOK ROAD, SUITE 100
FREEHOLD, NJ 07728
732.446.8446

LANDSCAPE ARCHITECT
MELILLO+BAUER ASSOCIATES
2339 HIGHWAY 34, BUILDING D-3
MANASQUAN, NJ 08736
732.528.0664



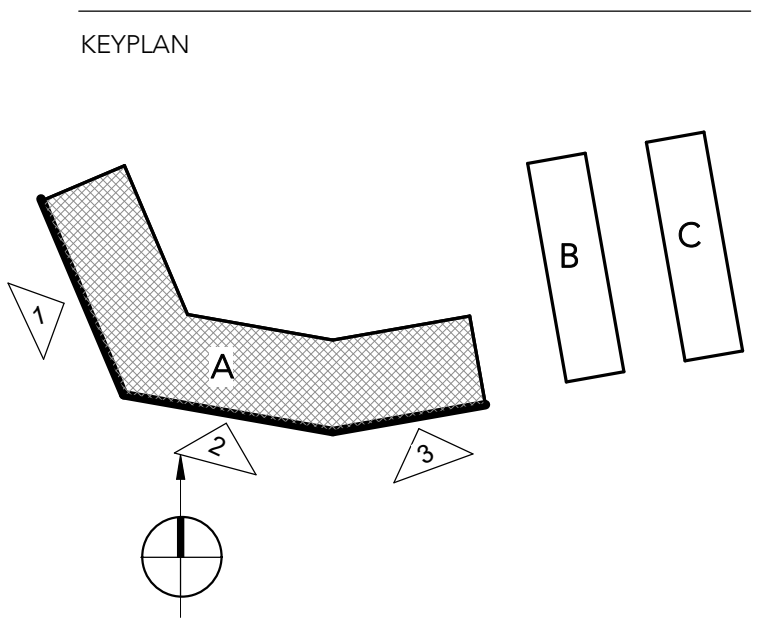
3 ELEVATION - BLDG A - SOUTHEAST
3/32" = 1'-0"



2 ELEVATION - BLDG A - SOUTH
3/32" = 1'-0"



1 ELEVATION - BLDG A - SOUTHWEST
3/32" = 1'-0"



| REV # | DATE | DESCRIPTION |
|-------|----------|----------------------|
| 1 | 07/15/20 | SITE PLAN SUBMISSION |

SEAL

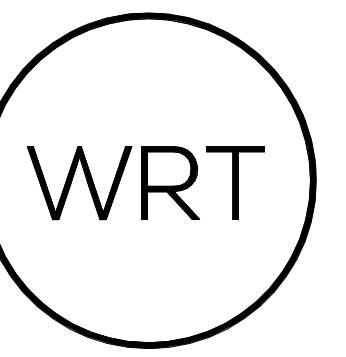
MATERIAL NOTES:

1. METAL COPING
2. ALUMINUM BALCONY RAILINGS, TYP
3. BRICK
4. VINYL SIDING, COLOR 1
5. VINYL SIDING, COLOR 2
6. VERTICAL FAUX WOOD SIDING
7. FIBERGLASS DOOR
8. VINYL WINDOW AND TRIM, TYP
9. METAL TRIM

WRT PROJECT # 8423
ISSUE DATE 07/15/20
DRAWN BY Author
CHECKED BY Checker
SCALE 3/32" = 1'-0"

BLDG A - EXTERIOR ELEVATIONS Z-202

COPYRIGHT © 2020 - Wallace Roberts & Todd, LLC - ALL RIGHTS RESERVED - All basic designs, arrangements and plans indicated or represented by this drawing and written material appearing herein constitute the original and unpublished work of Wallace Roberts & Todd, LLC and the same may not be duplicated, used or disclosed to any person, firm or corporation for any purpose whatsoever without the written consent of the architect.



DEPOT & PINE STREET REDEVELOPMENT

PIRHL

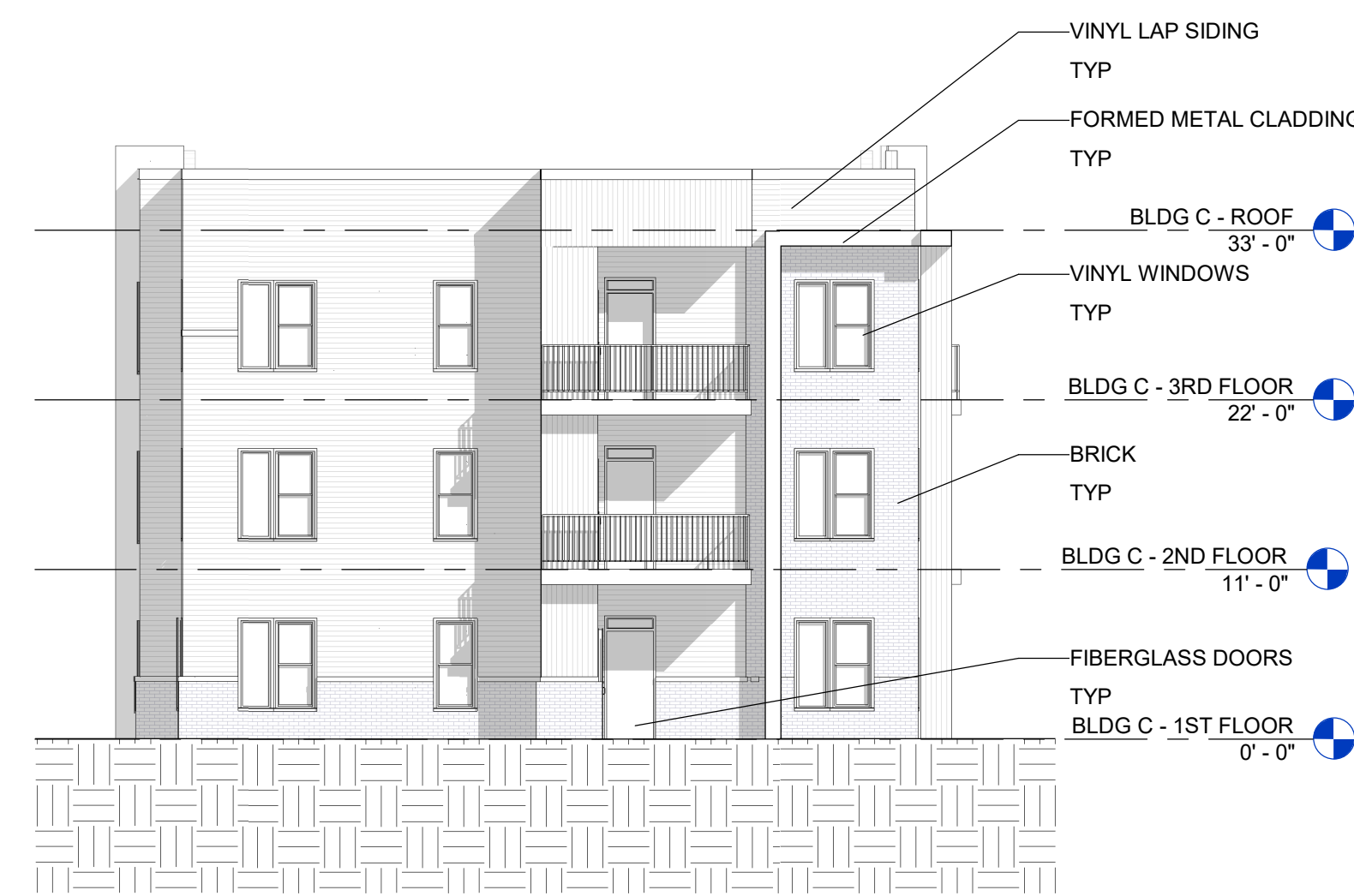
BLOCK 2301, LOTS 10-12 AND 14-16, TOWNSHIP OF VERONA, ESSEX COUNTY, NEW JERSEY

OWNER
PIHRL ACQUISITIONS LLC
5 COMMERCE WAY, SUITE 210E
HAMILTON, NJ 08691
609.751.9664

ARCHITECT
WALLACE ROBERTS & TODD, LLC
1700 MARKET STREET, SUITE 2800
PHILADELPHIA, PA 19103
215.732.5215
WRTDESIGN.COM

CIVIL ENGINEER
ESE CONSULTANTS, INC.
100 WILLOW BROOK ROAD, SUITE 100
FREEHOLD, NJ 07728
732.446.8446

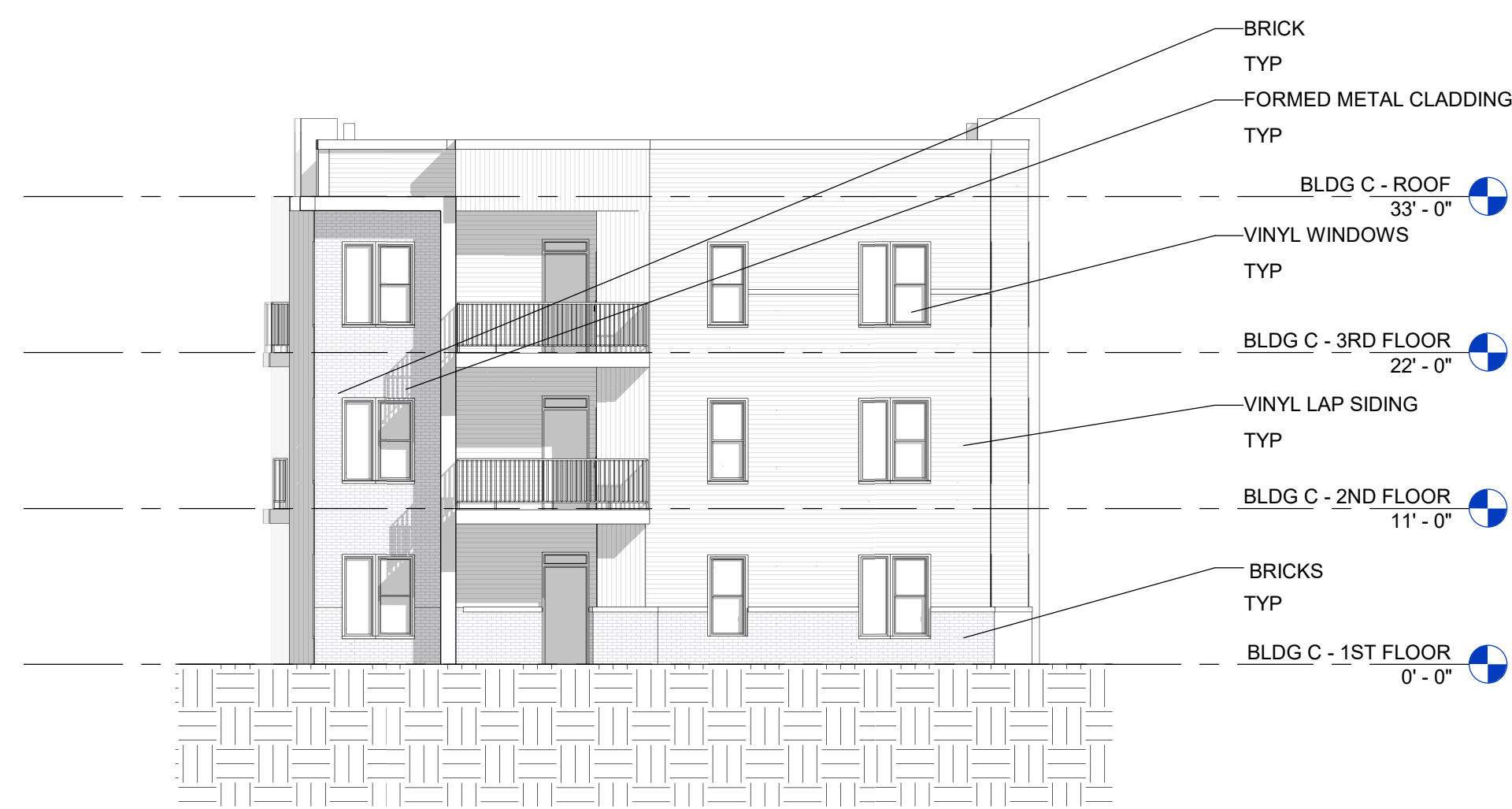
LANDSCAPE ARCHITECT
MELILLO+BAUER ASSOCIATES
2339 HIGHWAY 34, BUILDING D-3
MANASQUAN, NJ 08736
732.528.0664



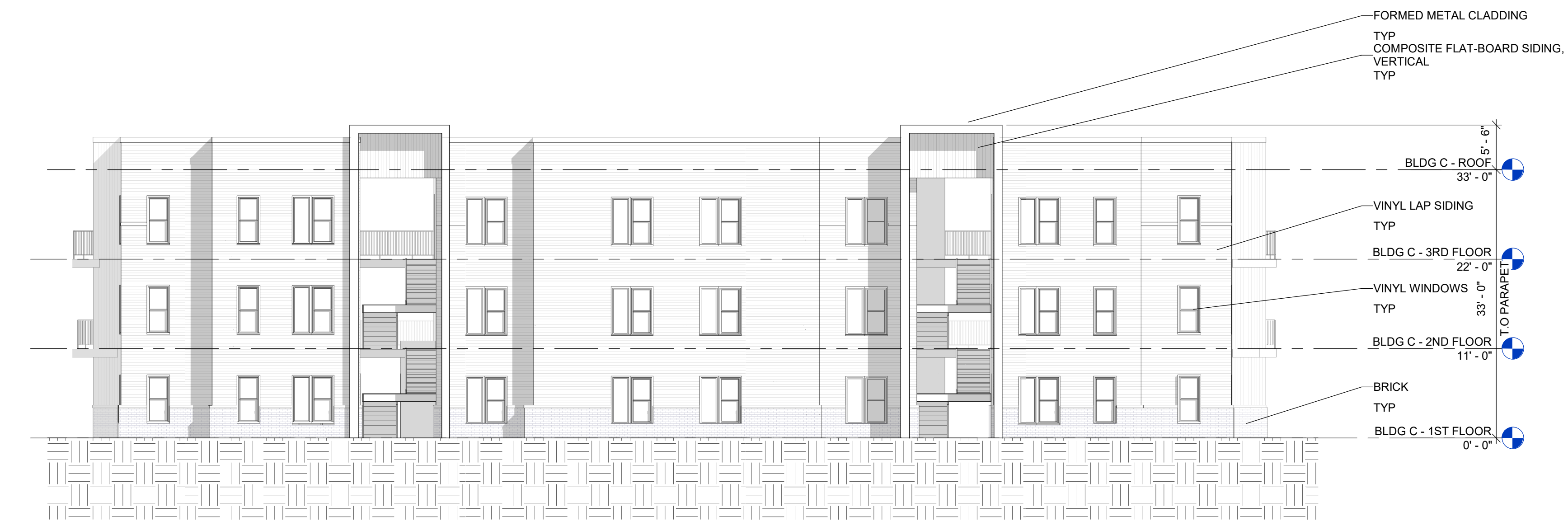
4 ELEVATION - BLDG B AND C - NORTH
3/32" = 1'-0"



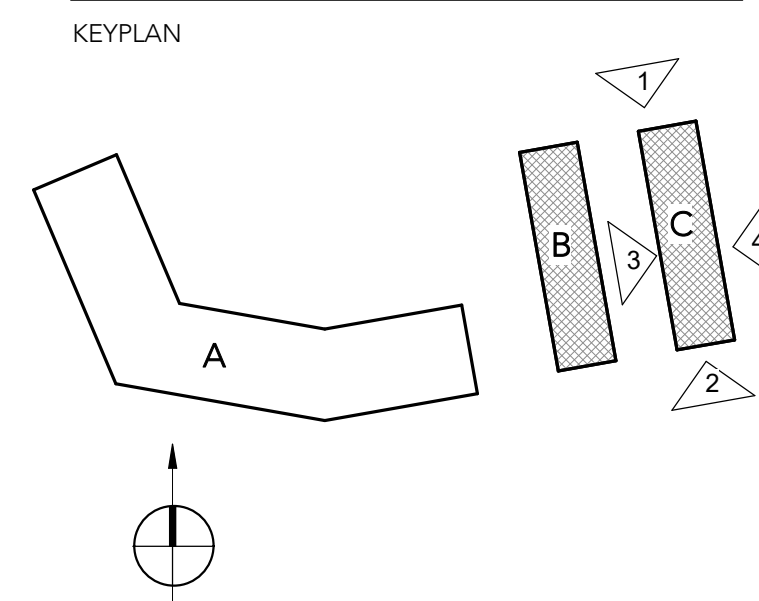
3 ELEVATION - BLDG B AND C - WEST
3/32" = 1'-0"



2 ELEVATION - BLDG B AND C - SOUTH
3/32" = 1'-0"



1 ELEVATION - BLDG B AND C - EAST
3/32" = 1'-0"



| REV # | DATE | DESCRIPTION |
|-------|----------|----------------------|
| 1 | 07/15/20 | SITE PLAN SUBMISSION |

SEAL

MATERIAL NOTES:

- METAL COPING
- ALUMINUM BALCONY RAILINGS, TYP
- BRICK
- VINYL SIDING, COLOR 1
- VINYL SIDING, COLOR 2
- VERTICAL FAUX WOOD SIDING
- FIBERGLASS DOOR
- VINYL WINDOW AND TRIM, TYP
- METAL TRIM

COPYRIGHT © 2020 - Wallace Roberts & Todd, LLC - ALL RIGHTS RESERVED -
All basic designs, arrangements and data indicated or represented by this drawing and written material appearing herein constitute the original and unpublished work of Wallace Roberts & Todd, LLC and the same may not be duplicated, used or disclosed to any person, firm or corporation for any purpose whatsoever without the written consent of the architect.

SITE PLAN SUBMISSION

WRT PROJECT # 8423
ISSUE DATE 07/15/20
DRAWN BY Author
CHECKED BY Checker
SCALE 3/32" = 1'-0"

BLDG B & C - EXTERIOR ELEVATIONS Z-203

E:\Rev\8423\PIRHL_VERONA_081914.rvt 7/15/20 2:21:30 PM